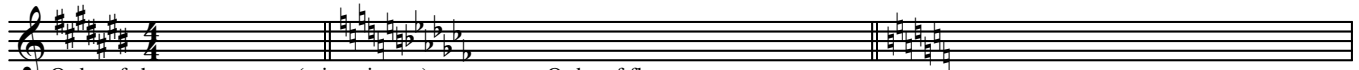


When you change keys, use a double bar and "cancel" the accidentals with natural signs



Order of sharps: (mirror image)
FCGDAEB

Order of flats:
BEADGCF

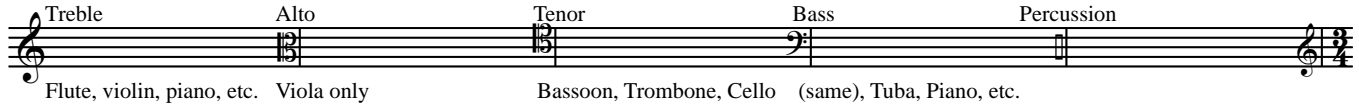
Naming major keys with sharps:
Go up a m.2 from the last sharp;
in this case, B is the last sharp, C# Major
C, G, D, A, E, B, F#, C#

Naming majors keys with flats:
The key is named for the 2nd to last flat (except for F);
in this case, C-flat Major in this case, C Major
C, F, Bb, Eb, Ab, Db, Gb, Cb

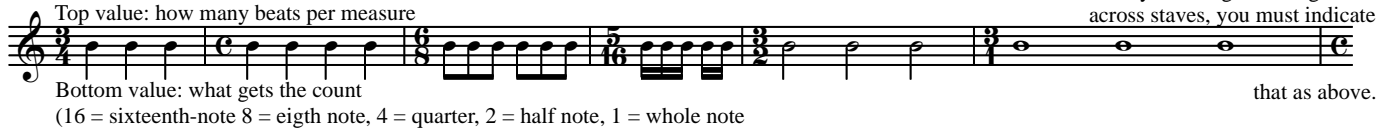
Naming minor keys (all):
The key is name of the Relative Minor is derived from the minor 3rd below the name of the Relative Major key;
in this case, A#minor
A, E, B, F#, C#, G#, D#, A#

in this case, A-flat minor in this case, A minor
A, D, G, C, F, Bb, Eb, Ab

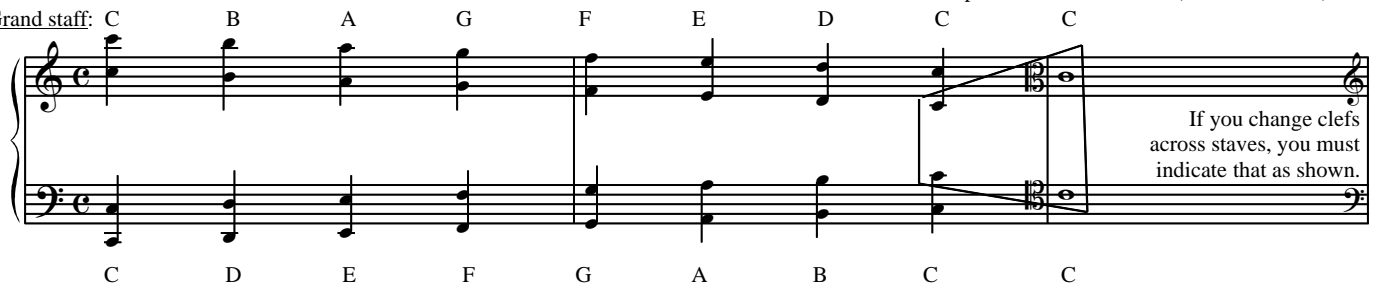
Clefs:



Time Signature:



Grand staff:



Notes are grouped according to beats

It gets a little more complicated with compound time signatures

